



YOSHIMURA

RESEARCH & DEVELOPMENT OF AMERICA, INC.

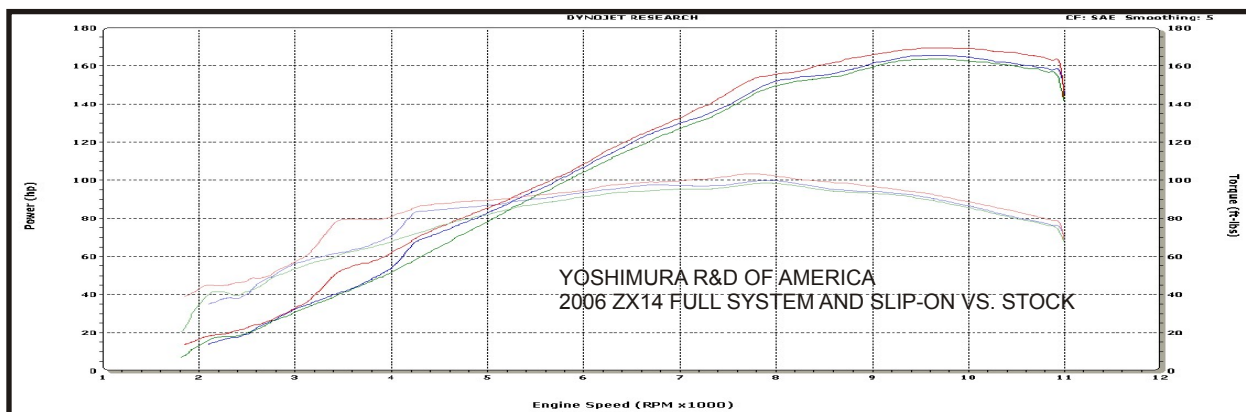
5420 DANIELS STREET STE A, CHINO CA., 91710 · (800)634-9166 · (909)628-4722 · FACSIMILE (909)591-2198

www.yoshimura-rd.com

YOSHIMURA PERFORMANCE EXHAUST SYSTEM

**KAWASAKI
2006
ZX-14R**

1425272	TRC RACE SLIP-ON SYSTEM WITH CARBON FIBER SLEEVE
1425275	TRC RACE SLIP-ON SYSTEM WITH STAINLESS STEEL SLEEVE
1425277	TRC RACE SLIP-ON SYSTEM WITH TITANIUM SLEEVE



THIS PRODUCT IS DESIGNED FOR USE IN CLOSED COURSE RACING AND IS NOT INTENDED FOR HIGHWAY USE.



NOTE: IN THE STATE OF CALIFORNIA, IT IS ILLEGAL TO MODIFY THE EMISSION CONTROL SYSTEM, WHICH INCLUDES THE CARBURETORS OF ANY VEHICLE.

Caution: *Exhaust system can be extremely hot. Let motorcycle cool down before beginning installation.*

Note: *Read through all instructions before beginning installation.*

Tools Needed:

Metric Socket Set 7/16" Deep Socket 3/8" Ratchet and Extension
Metric Allen Wrench Set Torque Wrench

Installation Steps:

- 1 Remove left and right stock mufflers and tailpipes.
- 2 Apply rubber heat insulators to inside of muffler clamps and slide muffler clamps onto mufflers.
- 3 Slide supplied exhaust clamps over Yoshimura tailpipe inlets.
- 4 Install Yoshimura slip-ons using stock hardware (extra large stock muffler mount washers will not be used).

NOTE: Yoshimura muffler clamps mount on the outside of the stock muffler mounting locations. Yoshimura tailpipe brackets mount on the inside of the stock tailpipe mount locations (see Fig. 1).

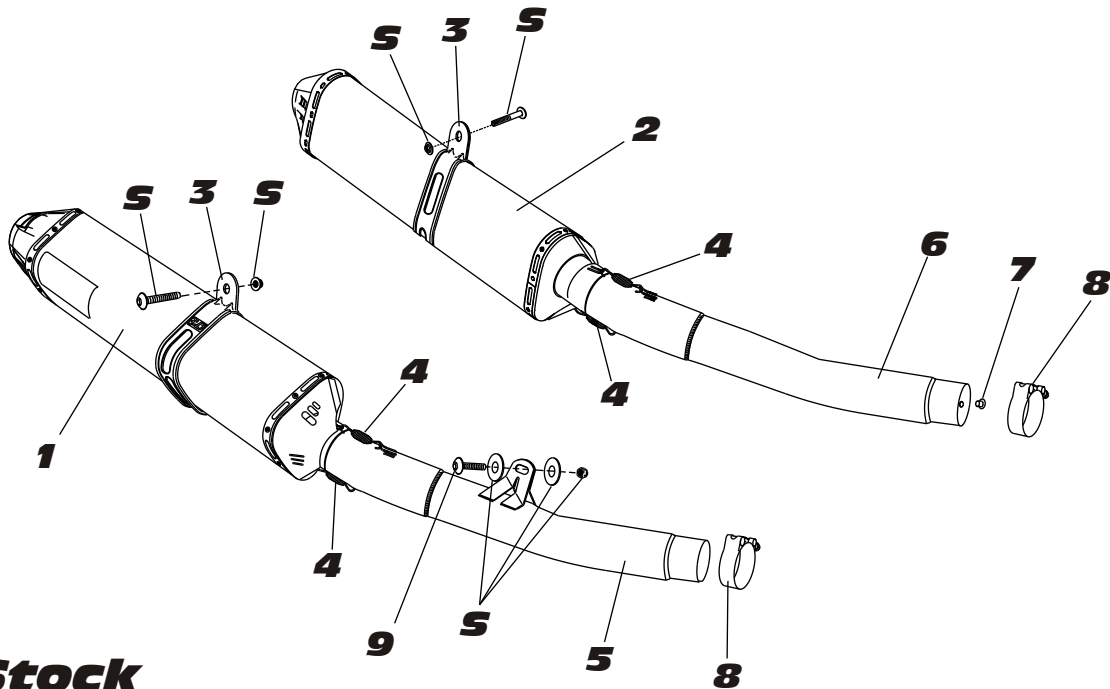
- 5 Torque muffler mounting bolts and tailpipe mounting bolts to 2.5 kgf-m (18 lb-ft).
- 6 Near the inlet of the left Yoshimura tailpipe is a hole. Drill a 13/64" hole in the stock header, using the hole in the left tailpipe as a guide. Install supplied collector rivet so the head of the rivet is flush on the tailpipe. Center the exhaust clamp over the rivet and torque left and right exhaust clamps to 1.1 kgf-m (8.0 lb-ft).
- 7 It is recommended that the entire exhaust system be wiped down with rubbing alcohol to remove oil and fingerprints. This will help prevent tarnishing of the finish after the exhaust is heated up.
- 8 Before starting motorcycle, check for proper clearance between new exhaust system and motorcycle (i.e. swing-arm, fairings etc.). If any problem is found, please carefully follow through the installation steps again. If problem still persists, please call Yoshimura technical department at (800) 634-9166/ in CA (909) 628-4722.

Note: After starting motorcycle, it is normal for new exhaust system to emit smoke until oil residue burns off.

Note: As an option Yoshimura R&D of America has come up with noise reducing inserts that can be easily installed. That will reduce the DB to about 93 to 94.5 DB. Sold separately (part # INS-D-K)



#142527(2,5,7)



S = Stock

Parts Diagram

NO.	DESCRIPTION	QTY	PART #
1	Yoshimura Muffler Assembly (Right Side) with Carbon Fiber Sleeve with Stainless Steel Sleeve with Titanium Sleeve	1	CRTRC166W SRTRC166W TRTRC166W
2	Yoshimura Muffler Assembly (Left Side) with Carbon Fiber Sleeve with Stainless Steel Sleeve with Titanium Sleeve	1	CRTRC166WL SRTRC166WL TRTRC166WL
3	Stainless Steel Muffler Clamp Stainless Steel or Titanium Sleeve uses Carbon Fiber Sleeve uses	2	CTS104X CTS104
4	Medium Race Exhaust Spring	4	RACE-SPS-1
5	Yoshimura Tailpipe (Right Side)	1	1425-427
6	Yoshimura Tailpipe (Left Side)	1	1425-426
7	Securing Rivet	1	S-RIVET
8	Stainless Steel Exhaust Clamp	2	20062
9	M8X55 Bolt	1	M8X55H
**	Yoshimura Vinyl Sticker	2	17028-BLK
**	Muffler Clamp Heat Insulator	2	HT SHLDTRS